

- FLETCHER -

SELECT

SOLID CLEAR PINE MOULDINGS



RADIATA PINE

Radiata Pine (*Pinus Radiata*) is a versatile and beautiful species of pine. Grown in sustainable tree farms, New Zealand Radiata Pine is harvested on a 30 year rotation, giving large diameter trees with mature clearwood. These trees are also pruned to 6 meters, allowing long length clear products in wide widths to be produced. Used extensively as solid clear pine mouldings for the last 20 years, Radiata's properties have been proven in the market. Due to its superior workability (see Table 1), Radiata pine mouldings can be produced with a high quality surface finish, which accepts any paint, stain or natural finish.

FLETCHER® SOLID CLEAR PINE MOULDINGS

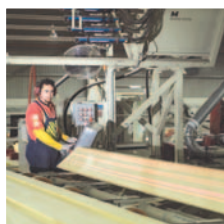
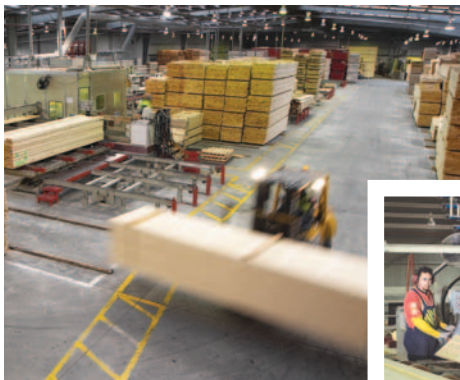
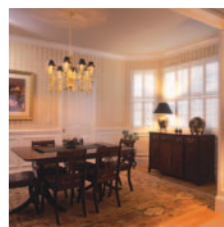
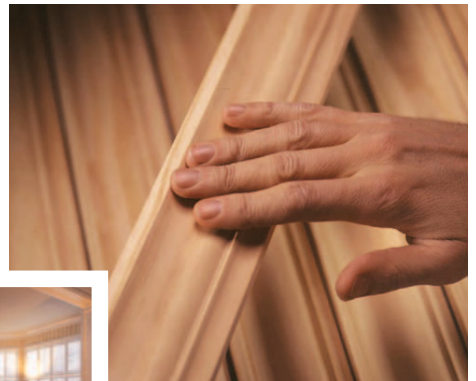
The availability of this resource enables Fletcher® to provide a sustainable range of solid clear pine mouldings for customers. Lengths up to 4.8m and most sizes and profiles are possible. Fletcher® clear pine mouldings are all FSC-certified and are supplied

- Set Length (SL) or Random Length (RL)
- Stain grade (clear face and edges) quality

Mouldings can also be supplied individually bar coded for retail, and bundled.

Solid clear pine mouldings don't contain fingerjoints so the customer has the option of a clear or stain type of finish, as well as providing a superior opaque finish — no telescoping of the fingerjoints through a paint finish.

Solid clear pine is ideal for smaller profiles and where the strength of the piece is important. Fletcher® also produces a wide range of high quality clear pine boards that can be matched with clear pine mouldings for a more decorative effect.



FLETCHER WOOD SOLUTIONS®

Fletcher Wood Solutions® modern manufacturing operations are located in Taupo, New Zealand. Fletcher® solid clear pine mouldings are produced on modern high-speed moulders which ensure a superior finished surface. Located in close proximity to FSC-certified forests and international ports, Fletchers® facilities are well positioned to provide quality clear pine products to the world at the most cost-effective price.

Fletcher's® own sawmill produces the specific feedstock so mouldings can be produced efficiently for any market.

Fletcher® has successfully supplied a full range of solid clear pine mouldings (including architraves and small mouldings) to the US market for over 15 years.

FSC

The Forest Stewardship Council® (“FSC”) recognizes Fletcher’s® strong commitment to responsible materials procurement. Fletcher’s® processing mills are chain of custody certified by the FSC, demonstrating that they procure wood which meets strict environmental, social, and economic standards. We source logs from radiata pine tree farms that are harvested on a renewable basis, utilizing responsible management techniques that meet all local environmental requirements. Fletcher® does not source from natural or native forests.



The mark of responsible forestry

COMPARISON OF MACHINING AND RELATED PROPERTIES – NZ RADIATA PINE AND NORTH AMERICAN TIMBERS

Common Name	Planing	Shaping	Turning	Cross-Cutting	Boring	Mortising	Sanding	Finger-Jointing	Gluing	Hardness	Nail-Withdrawal	Nail-Splitting	Screw-Splitting	Stability	Overall Rating
Radiata pine	4	5	3	4	3	4	4	4	4	3	2	2	4	2	48
Yellow poplar	3	5	4	4	3	5	3	4	4	3	3	1	5	1	48
Sugar pine	3	4	2	4	3	3	4	5	3	2	1	4	5	4	47
Ponderosa pine	2	5	2	4	3	5	4	5	3	2	1	4	5	2	47
Douglas fir	2	5	1	5	2	5	4	5	3	2	2	2	5	3	46
Red pine	3	5	2	3	2	5	5	5	3	2	1	3	5	1	45
Eastern white pine	3	5	3	3	3	4	3	5	3	2	1	3	5	1	44
Red alder	4	5	2	2	3	5	2	4	4	3	2	2	5	1	44
Shortleaf pine	1	4	3	4	3	5	4	4	3	3	2	2	4	1	43
Loblolly pine	2	4	1	3	2	5	4	4	3	3	2	2	4	1	40
Western white pine	2	3	3	4	2	4	2	5	3	2	1	2	4	1	38
Western hemlock	1	3	1	4	2	4	4	4	3	2	2	2	4	2	38
White fir	1	3	1	4	2	2	4	5	3	2	2	2	4	2	37
Eastern cottonwood	1	2	2	2	3	5	1	4	3	2	2	3	5	1	36

1=Very poor, 2=Poor, 3=Average, 4=Good, 5=Excellent

Source: Forest Research Institute, Rotorua, New Zealand. 1988. Machining properties: how does radiata pine shape up?
What's New in Forest Research No 163

FLETCHER
SELECT

www.fletcherwoodsolutions.com
1-866-FSC-WOOD
1-866-372-9663

